

List 2021 of approved swimsuits CMAS – V2

Update June 9th, 2021

DIANA

The DIANA suits aren't produced more since May 1st 2018. Consequently, from January 1st, 2021, Diana swimsuits can't be used during the CMAS Finswimming Competitions.

JAKED (<http://www.finsuits.com> - info@finsuits.com)

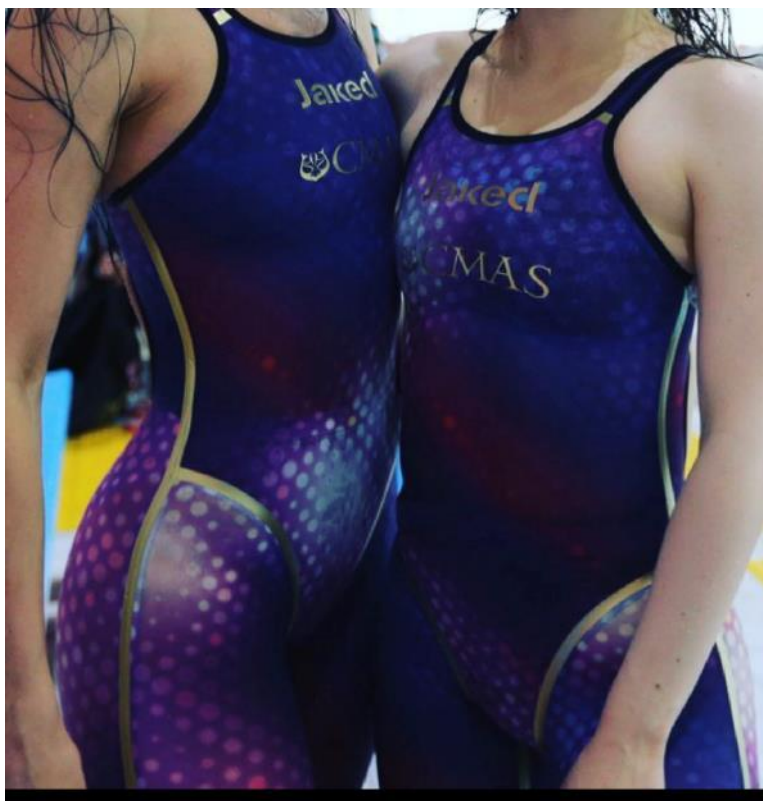
Textile swimsuit

Textile swimsuit JAKED W1/M2/M1 CMAS KATANA

Black and new colour 2021



new colour 2021 KATANA model



Certification for previous colours still current



JAKED CMAS J12
Textile swimsuit JAKED CMAS J12 Lite



Black/orange

Textile swimsuit JAKED CMAS JKEEL

Colours, Black/Orange or Black/Blue/ or Black/print RocknRoll

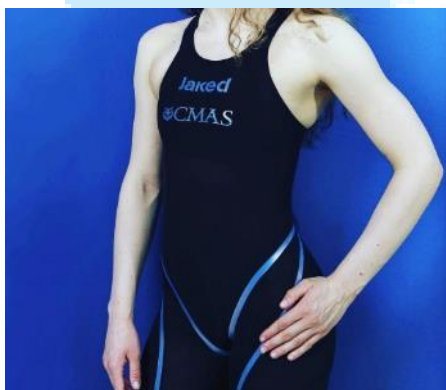


JAKED Blade M1/M2/W1

Textile swimsuit

Fabric: J Komp (Blade) is 64% Polyamide (PA or PAM) – 36% Elastane (EA or EL)

Color Black



JAKED ALPHA

Textile swimsuit

Fabric: Revolutionary Energy by Carvico - 71% Polyamide (PA or PAM) – 29% Elastane (EA or EL)

3 colors: 620 MG (for magenta) – 010 BK (for black) – 321 AG (for army green)

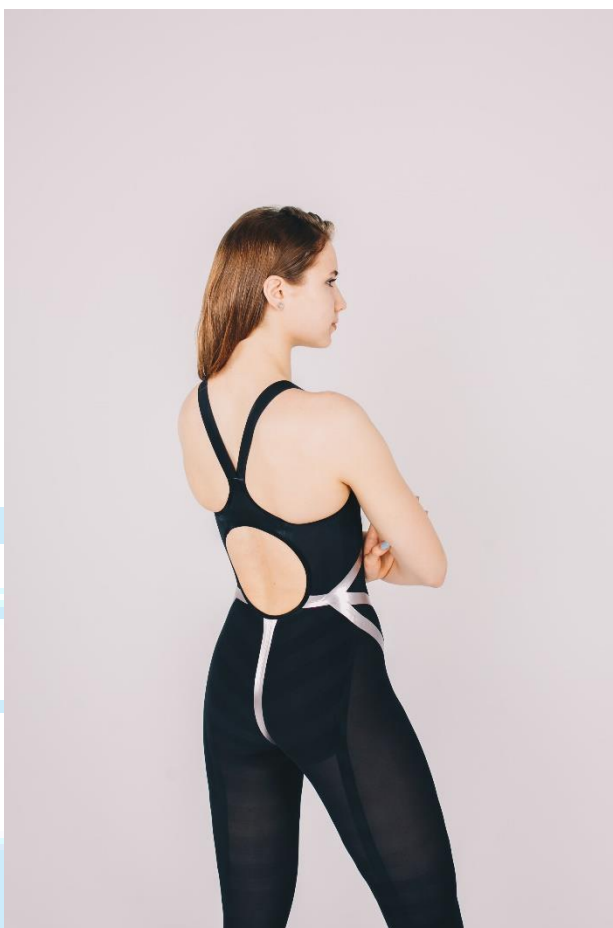
Available in Full body, pants.



JAKED FORCE (man, woman, pants) new design 2021

Fabric: 51% PA, 49% EA Tape color, Gold, Pink (Rosé)





Textile swimsuit

Be careful white square back on swimsuit
must be only with CMAS logo

ARENA art. CMAS R-EVO +



Men Pant

Woman Full Body open back



ARENA art. CMAS R-EVO+.....

Men Full Body

Woman Full Body



Evo + for Man

65 % Polyamide
35 % Elastane

Evo + for Woman

New model of “REVO +”. It called Revo ONE. 3 colors

New model of REVO + Pant. Jammer REVO ONE.



ARENA art. CMAS Carbon. Textile swimsuit

outer shell	inside lining
52% Nylon	65% Nylon
47% Elastane	34% Elastane
1% Carbon	1% Carbon



Carbon Jammer



- Carbon PRO Closed back
- Carbon PRO Open back



Models: Powerskin Carbon Air Open and Closed back & Limited edition

Composition : 65% Nylon (Polyamide), 34% Elastane, 1% Carbon Fiber



Limited edition



Carbon Pro Jammer AIR



THIS MODELS POWERSKIN WILL BE NOT SOLD ANYMORE (Sept 2020)

Man Pant

- Powerskin Closed Back for Woman
- Powerskin Closed for Man

Powerskin Open back for
Woman



80%
poliammide
20% elastane



AQUARIUS FOR CMAS (<https://www.aquarius-swimwear.com>)

Textile swimsuit

Composition body: *one side*, 31% Polyamide/Nylon (PA or PAM) A), 43% Polyester (PL), 1% (CF), and *second side* 69 % Polyamide/Nylon (PA or PAM), 30% Elastane (EA or EL), 1% (CF).
Composition line: 71% Polyamide/Nylon (PA or PAM), 29% Elastane (EA or EL). Colour: Black/Pink – Black/Yellow.

Men and Women

My Skin iO Finswim Full Body



My Skin iO Finswim pants



My Skin iO Finswim Full Knee



My Skin iO Finswim Jammer



Sensation

Color: Black – Grey



Composition:

body:

80% polyamide (PL) - 20% Elastane (EA or EL),

Lining:

80% polyamide (PL) - 20% Elastane (EA or EL),

DEFLY



DEFLY PANTS



Composition: body:

- * 43% Polyester (PL), 31% Polyamide/Nylon (PA or PAM), 26% Elastane (EA or EL)
 - * 69% Polyamide/Nylon (PA or PAM), 30% Elastane (EA or EL), 1% Carbon Fiber.
- Lining: 71% Polyamide/Nylon (PA or PAM), 29% Elastane (EA or EL)

Composition: body:

- * 43% Polyester (PL), 31% Polyamide/Nylon (PA or PAM), 26% Elastane (EA or EL)
 - * 69% Polyamide/Nylon (PA or PAM), 30% Elastane (EA or EL), 1% Carbon Fiber.
- Lining: 71% Polyamide/Nylon (PA or PAM), 29% Elastane (EA or EL)

HEAD FOR CMAS MARES (Shop online with link bellow - swimming@shop.head.com)

Textile swimsuit

Composition: Elastane 32% (EA or EL) - Polyamide 68% (PA or PAM)

Model LIQUIDFIRE ACT

Full Body Man

[Click to go on model](#)

Pants Man

[Click to go on model](#)

Full Body Lady

[Click to go on model](#)



YINFAST INDUSTRIAL CO – LTD FOR CMAS

Shop online:

Textile swimsuit

WOMEN F191	WOMEN F191
	 
Color: Black	Color:
Composition: Body: 59% Polyamide(PA) - 41% Elastane(EA), Lining: 59% Polyamide(PA) - 41% Elastane(EA),	Composition: Body: 59% Polyamide(PA) - 41% Elastane(EA), Lining: 59% Polyamide(PA) - 41% Elastane(EA),

WOMEN F192	WOMEN F192
	 
Color: Black	Color:
Composition: Body: 59% Polyamide(PA) - 41% Elastane(EA), Lining: 59% Polyamide(PA) - 41% Elastane(EA),	Composition: Body: 59% Polyamide(PA) - 41% Elastane(EA), Lining: 59% Polyamide(PA) - 41% Elastane(EA),

WOMEN F193	WOMEN F193
	
Color: Black	Color:
Composition: Body: 61% Polyamide(PA) - 39% Elastane(EA), Lining: 61% Polyamide(PA) - 39% Elastane(EA),	Composition: Body: 61% Polyamide(PA) - 39% Elastane(EA), Lining: 61% Polyamide(PA) - 39% Elastane(EA),
MEN F1901	MEN F1901
	
Color: Black	Color:
Composition: Body: 59% Polyamide(PA) - 41% Elastane(EA), Lining: 59% Polyamide(PA) - 41% Elastane(EA),	Composition: Body: 59% Polyamide(PA) - 41% Elastane(EA), Lining: 59% Polyamide(PA) - 41% Elastane(EA),

MEN F1902	MEN F1902
	
Color: Black	Color:
Composition: Body: 61% Polyamide(PA) - 39% Elastane(EA), Lining: 61% Polyamide(PA) - 39% Elastane(EA),	Composition: Body: 61% Polyamide(PA) - 39% Elastane(EA), Lining: 61% Polyamide(PA) - 39% Elastane(EA),
MEN F1903	MEN F1903
	
Color: Black	Color:
Composition: Body: 59% Polyamide(PA) - 41% Elastane(EA), Lining: 59% Polyamide(PA) - 41% Elastane(EA),	Composition: Body: 59% Polyamide(PA) - 41% Elastane(EA), Lining: 59% Polyamide(PA) - 41% Elastane(EA),

MEN F1904	MEN F1904
	
Color: Black	Color:
Composition: Body: 61% Polyamide(PA) - 39% Elastane(EA), Lining: 61% Polyamide(PA) - 39% Elastane(EA),	Composition: Body: 61% Polyamide(PA) - 39% Elastane(EA), Lining: 61% Polyamide(PA) - 39% Elastane(EA),
MEN F1905	MEN F1905
	
Color: Black	Color:
Composition: Body: 59% Polyamide(PA) - 41% Elastane(EA), Lining: 59% Polyamide(PA) - 41% Elastane(EA),	Composition: Body: 59% Polyamide(PA) - 41% Elastane(EA), Lining: 59% Polyamide(PA) - 41% Elastane(EA),