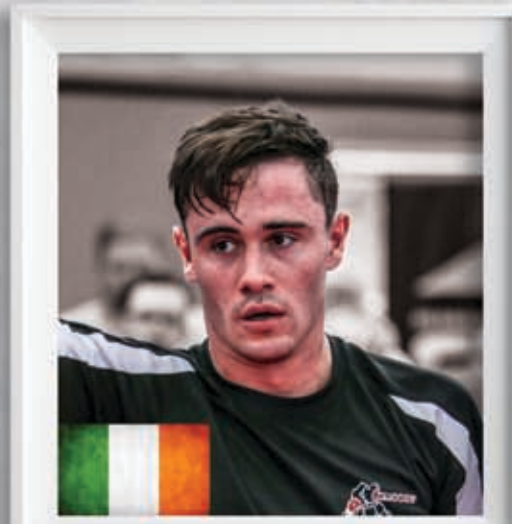


GRAND CHAMPION HALL OF FAME



DESSIE LEONARD IRELAND
Men's Grand Champion 2016



BEV STURZAKER UK
Women's Grand Champion 2009 - 2013, 2015, 2016



TAMAS IMRE HUNGARY
Men's Grand Champion 2015



SHAUNA BANNON IRELAND
Women's Grand Champion 2014



RYAN MARLOW UK
Men's Grand Champion 2014



ROBBIE LAVOIE CANADA
Men's Grand Champion 2013



JADI TENTION USA
Men's Grand Champion 2012



GREGORIO DI LEO ITALY
Men's Grand Champion 2011



KRISZTIAN JAROSZKIEVICZ HUNGARY
Men's Grand Champion 2010



ANGELOPOULOS ANDREAS GREECE
Men's Grand Champion 2009

BRISTOL OPEN

BRISTOL OPEN

event information

BRISTOL
2017 EUROPEAN
CITY OF SPORT



venue

The City Academy, Bristol Sports Centre, Russell Town Avenue, Bristol, BS5 9JH
Tel: +44 (0) 117 954 2811 Fax: +44 (0) 117 954 2857 www.cityacademybristol.org

schedule

Friday 13th October
Weigh-in: All fighters (at venue) 19.00 - 22.00

Saturday 14th October
Weigh-in: Continuous fighters 9.00
Weigh-in: Points fighters 9.00 - 17.00
All continuous divisions start 11.00
All tag teams start 13.00
Male & female Grand Champion start 15.00
Night show featuring finals 17.30

Sunday 15th October
Weigh-in: Points fighters 9.00
All points divisions start 11.00

round times

Kids Continuous 2 x 1.5 mins
Adults Continuous 2 x 2 mins
Tag Team Points 1 x 3 mins
Kids Beginner/Intermediate Points 1 x 2 mins
Kids Advanced Points 1 x 3 mins (2 x 2 mins final)
Adults Beginner/Intermediate Points 1 x 2 mins (2 x 2 mins final)
Adults Advanced Points 2 x 2 mins
Adults Executive Points 1 x 3 mins (2 x 2 mins final)
Grand Champion Points 1 x 2 mins (2 x 2 mins final)

travel

By plane
Bristol Airport 20km
London Heathrow 165km
London Gatwick 220km
London Stansted 260km

By train
Bristol Temple Meads 3.6km
Bristol Parkway 10.8km

By car

- Head southwest on M32 towards Exit 2
- At Junction 3, take A4320 exit to Bath/A4
- At roundabout take 1st exit onto Easton Way/A4320
- At roundabout take 1st exit onto Lawrence Hill/A420
- Continue on A420
- Turn left onto Russell Town Avenue

Bristol International Flyer

- Bus from Bristol Airport to central bus station = 15 minutes
 - 10 minute walk to Future Inn Hotel (see 'Accommodation')
 - 2 minute walk to Premier Inn Hotel (see 'Accommodation')
 - Cost £10 adult return / £7 child return (under 16 years)
 - Runs every 30 minutes - 1 hour from Bristol Airport
- www.flyer.bristolairport.co.uk/timetable_to_bia_mon_fri.php.

accommodation

HOTELS

Future Inn Cabot Circus Hotel
Tel: +44 (0) 845 094 5588
www.futureinns.co.uk

Travelodge Anchor Road or Central Mitchell Lane
Tel: +44 (0) 871 984 6223
www.travelodge.co.uk

Premier Inn The Haymarket or Lewins Mead
Tel: +44 (0) 871 527 8156
www.premierinn.com

Holiday Inn Filton
Tel: +44 (0) 871 942 9014
www.holidayinn.com

The Clifton Hotel Tel: +44 (0)117 973 6882
The Rodney Hotel Tel: +44 (0)117 973 5422

The Washington
Tel: +44 (0)117 973 3980
www.cliftonhotels.com

This year we will only be providing airport and arena transfers for the city centre hotels. If you require confirmation please contact us before making booking.

APARTMENTS

Alderman Apartments
Tel: +44 (0) 844 822 5778
www.alderman-apartments.co.uk

Premier Apartments
Tel: +44 (0) 117 9544 800
www.premierapartmentsbristol.com

entry fees

All Competitors must pre-register via Sport Data before midnight Wed 11th October.

First division	£25.00
Additional division	£25.00
Grand Champion	£25.00
Kids Tag Team	£30.00
Adults Tag Team	£30.00
1 day spectator	£10.00
2 day spectator	£15.00

ALL FEES
COLLECTED
ON THE DAY

contact details

Sean Veira +44 (0) 7850 715 961
Andy Cleeves +44 (0) 7590 682 683
Sharon Gill +44 (0) 7738 752 273
info@bristolopen.com / www.bristolopen.com

Bristol Open is a pre-registration only event: www.sportdata.org

Registration opens mid September. Closes midnight 11th October.



BRISTOL OPEN 2017

14th & 15th OCTOBER
THE CITY ACADEMY | BRISTOL | UK

WITH THANKS TO ALL OUR SPONSORS



bristolopen.com





★ **Total Prize Money £6,500!**

★ **Kids Tag Team**

1st Place (all divisions)
£50.00

Prize money donated by Jaczy Cashman of the Tony Cashman Fund.

★ **Ladies**

Continuous, Points & Veterans
1st Place (all divisions)
£100.00

★ **Adult Tag Team**

1st Place (all divisions)
£200.00

★ **Junior Open Weight**

Boys and Girls 16-18 years.
1st Place 2nd Place
£100.00 £50.00

★ **Men**

Continuous, Points & Veterans
1st Place (all divisions)
£100.00

★ **Grand Champion**

1st Place 2nd Place
£600.00 £100.00
(all divisions)



Saturday 14th divisions

Kids Light Contact

Pee wee boys 9 years and under		Boys 10-16 years mixed grade		Girls 10-16 years mixed grade	
1	- 25kg (M)	8	- 28kg (M)	16	- 30kg (M)
2	- 28kg (M)	9	- 32kg (M)	17	- 37kg (M)
3	- 32kg (M)	10	- 37kg (M)	18	- 45kg (M)
4	+32kg (M)	11	- 42kg (M)	19	- 50kg (M)
Pee wee girls 9 years and under					
5	- 25kg (M)	12	- 47kg (M)	20	- 55kg (M)
6	- 28kg (M)	13	- 52kg (M)	21	+55kg (M)
7	+28kg (M)	14	- 57kg (M)		
		15	+57kg (M)		

Kids Tag Teams

NEW SECTIONS!

All kids tag team divisions – two per team

9 years and under	10, 11 and 12 years old	13, 14 and 15 years old	16, 17 and 18 years old
22 Mixed gender (M)	23 Boys (M)	25 Boys (M)	27 Boys (M)
	24 Girls (M)	26 Girls (M)	28 Girls (M)

Junior Open Weight

16-18 years
29 Girls Open Weight
30 Boys Open Weight

Ladies Continuous

31 - 55kg (B/I)
32 - 65kg (B/I)
33 +65kg (B/I)
34 - 55kg (A)
35 - 60kg (A)
36 - 65kg (A)
37 +65kg (A)

Mens Continuous

38 - 69kg (B/I)
39 - 79kg (B/I)
40 +79kg (B/I)
41 - 63kg (A)
42 - 69kg (A)
43 - 74kg (A)
44 - 79kg (A)
45 - 84kg (A)
46 +84kg (A)

Adult Tag Team

2 per team / mixed ability
47 Ladies (M)
48 Men -74kg (M)
49 Men +74kg (M)

Grand Champion

50 Ladies Open Weight
51 Mens Open Weight



★ **Over 100 fighting divisions**

- ★ State-of-the-art arena with easy access
- ★ Saturday night show with Open Weight finals
- ★ Bespoke awards and limited edition t-shirts
- ★ Championship title belts for Grand Champions



Sunday 15th divisions

Kids Points

Boys 10-15 years Beginners		Pee wee boys 9 years and under		Pee wee girls 9 years and under	
59	- 30kg (B)	52	- 25kg (M)	56	- 25kg (M)
60	- 37kg (B)	53	- 28kg (M)	57	- 28kg (M)
61	- 45kg (B)	54	- 32kg (M)	58	+28kg (M)
62	- 52kg (B)	55	+32kg (M)		
63	- 57kg (B)				
64	+57kg (B)				
Advanced		Girls 10-15 years Beginners		Boys 16-18 years Beginners	
65	- 28kg (A)	73	- 30kg (B)	84	- 63kg (B)
66	- 32kg (A)	74	- 37kg (B)	85	+63kg (B)
67	- 37kg (A)	75	- 45kg (B)		
68	- 42kg (A)	76	- 50kg (B)		
69	- 47kg (A)	77	+50kg (B)		
70	- 52kg (A)				
71	- 57kg (A)				
72	+57kg (A)				
		Advanced		Girls 16-18 years Beginners	
		78	- 30kg (A)	89	- 55kg (B)
		79	- 37kg (A)	90	+55kg (B)
		80	- 45kg (A)		
		81	- 50kg (A)		
		82	- 55kg (A)		
		83	+55kg (A)		
				Advanced	
				91	- 55kg (B)
				92	- 60kg (B)
				93	+60kg (B)

PLEASE NOTE: Proof of age and grade may be requested.

Ladies Points

94 - 60kg (B)
95 +60kg (B)
96 - 60kg (I)
97 +60kg (I)
98 - 50kg (A)
99 - 55kg (A)
100 - 60kg (A)
101 - 65kg (A)
102 - 70kg (A)
103 +70kg (A)

Mens Points

104 - 74kg (B)
105 +74kg (B)
106 - 74kg (I)
107 +74kg (I)
108 - 63kg (A)
109 - 69kg (A)
110 - 74kg (A)
111 - 79kg (A)
112 - 84kg (A)
113 - 89kg (A)
114 +89kg (A)

Masters

Points / +35 years Mixed ability

115 Ladies – open weight 116 Men - 74kg
117 Men +74kg

KEY

(M) Mixed ability
(B) Beginner
(B/I) Beginner/Intermediate
(I) Intermediate
(A) Advanced

Kids Beginner = novice up to and including 4th grade with no more than two years competition experience.
Kids Advanced = 5th grade upwards.
Adults Beginner = novice up to and including 3rd grade.
Adults Intermediate = 4th grade to pre brown/black.
Adults Advanced = brown/black.

